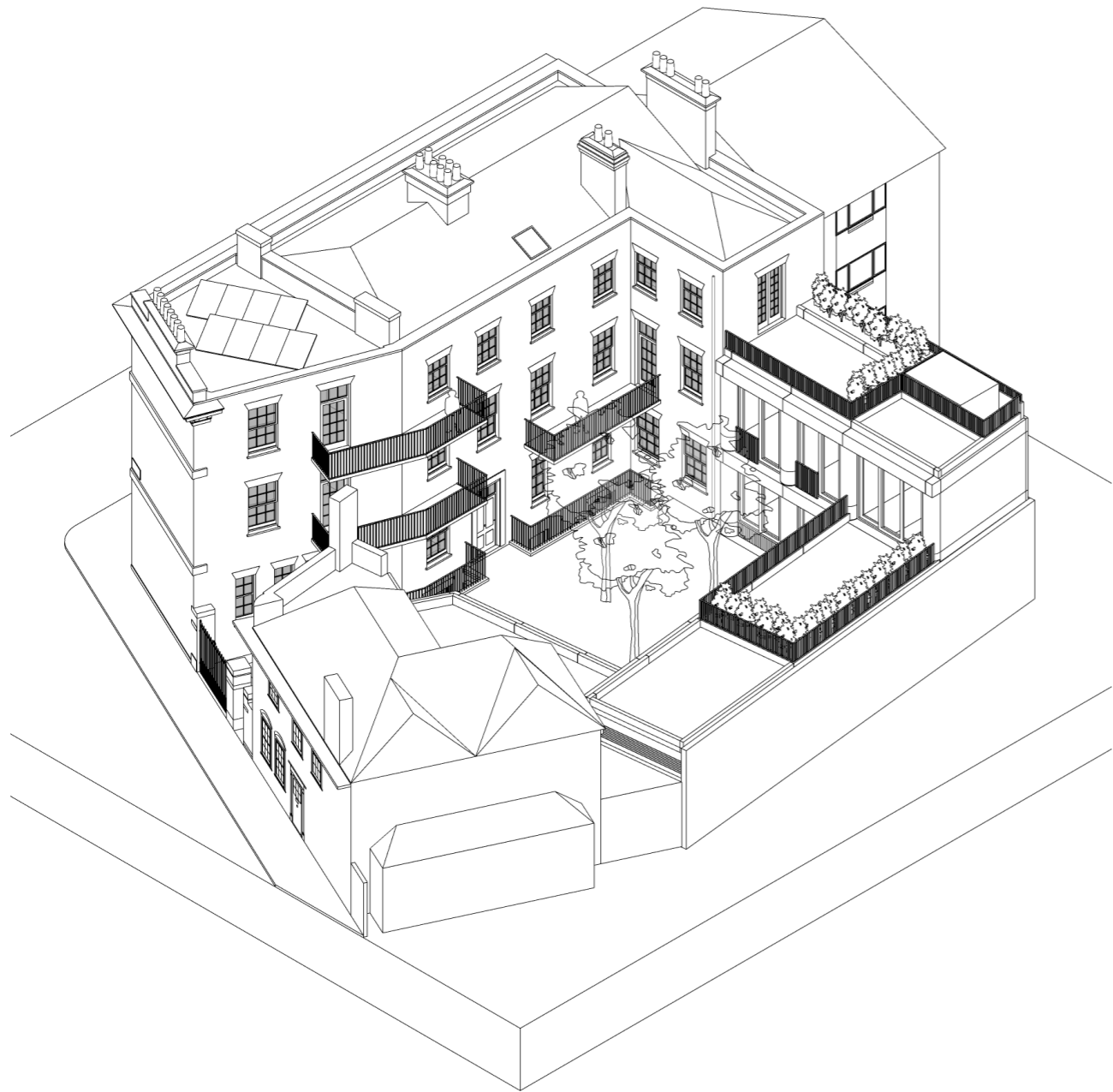


[20 NEWCOURT ST]

A DEVELOPMENT BY
WENDOVER





20 Newcourt Street is a truly unique collection of 9 apartments set within the former St John's Wood Police Station, which has been thoughtfully reimagined to provide light filled, contemporary spaces that blend form, function and beauty.



Area Schedule

UNIT	FLOOR	BEDROOMS	GIA (m ²)	GIA (ft ²)
A	Ground & Lower Ground	3	140	1,507
B	Ground & Lower Ground	3	142	1,528
C	First	1	62	667
D	First	1	50	538
E	First	1	54	581
F	Second	1	62	667
G	Second	1	50	538
H	Second	1	54	581
I	Ground & First Floor	2	98	1,057
Retail	Ground & First Floor	N/A	33	355
TOTAL			745	8,019



Highstreet living moments from London's greenest parks

★ 20 Newcourt Street

Travel Time:

- ① St John's Wood High Street, 1 minute
- ② Regent's Park, 2 minutes
- ③ St John's Wood Station, 9 minutes
- ④ Primrose Hill, 12 minutes
- ⑤ St John's Wood to Bond Street, 17 minutes

Local Ammenities on the High Street:

- ⑥ Soutine
- ⑦ Cinder
- ⑧ Babbo
- ⑨ The Hummingbird Bakery
- ⑩ The Ivy
- ⑪ Johnny Green
- ⑫ Panzer's Delicatessen

Local Leisure Facilities:

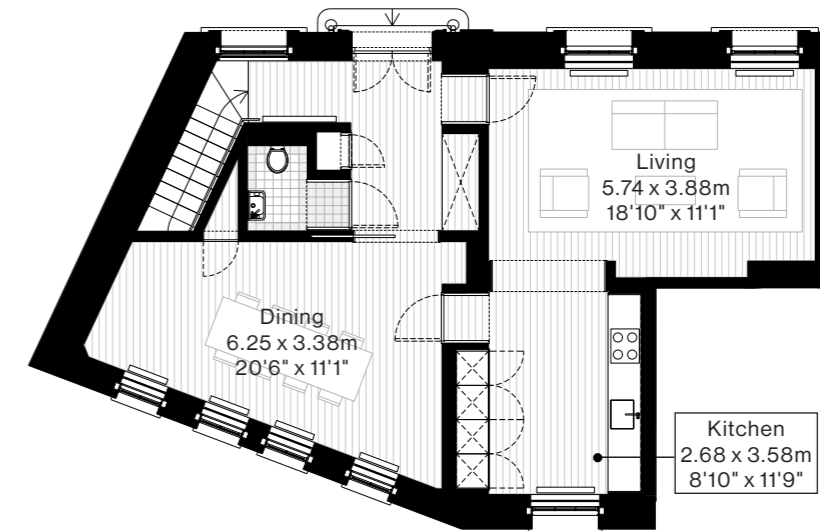
- ⑬ 1 Rebel Gym
- ⑭ Lord's Cricket Ground
- ⑮ London Zoo



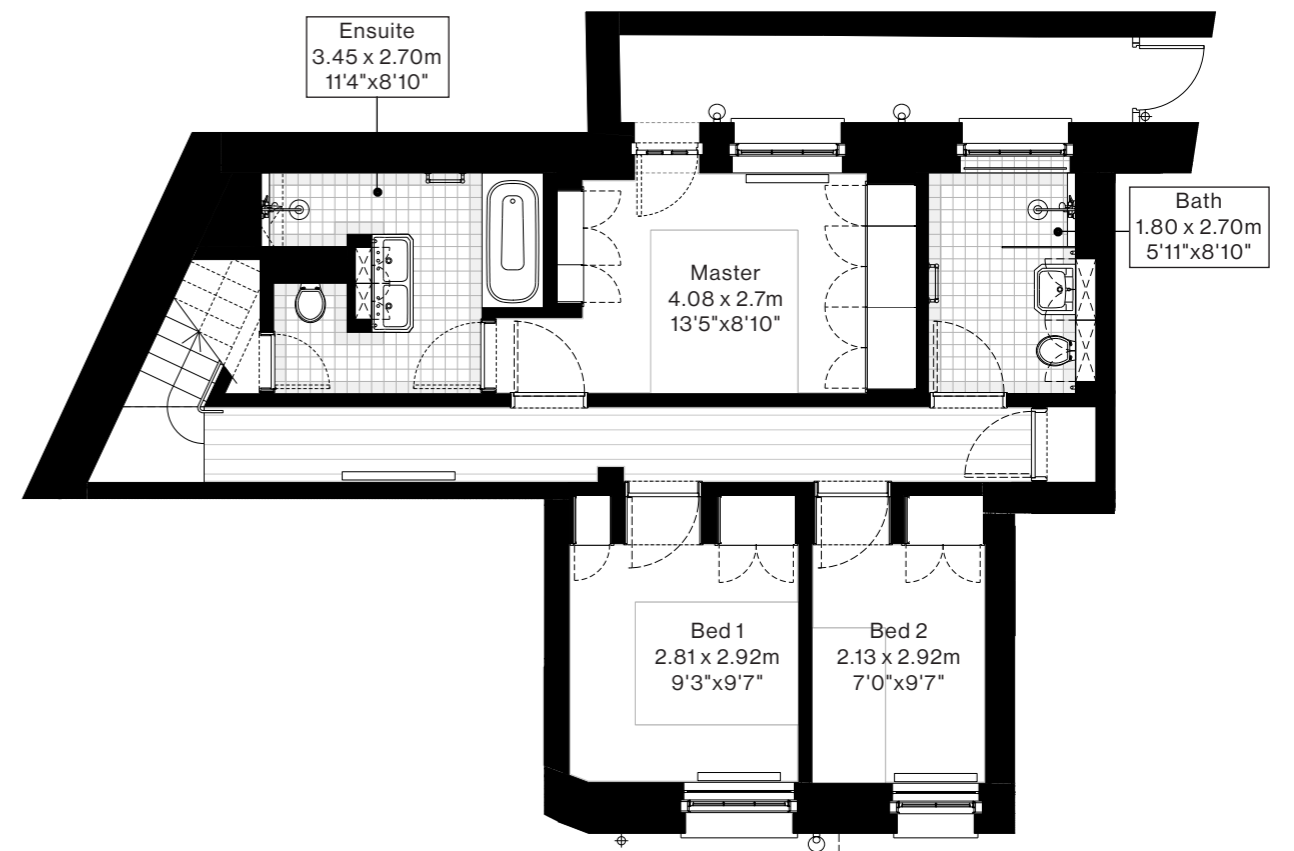


Unit A

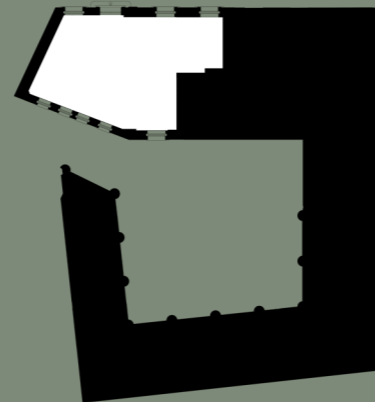
- Apartment Type: duplex
- Area: 140m²/1,506ft²
- Location: ground & lower ground floor
- Bedrooms: 3, 1 en-suite
- Living Room Ceiling Height: 3.38m
- Amenities: Private front door off Newcourt Street & covered bike storage.



Ground Floor Plan

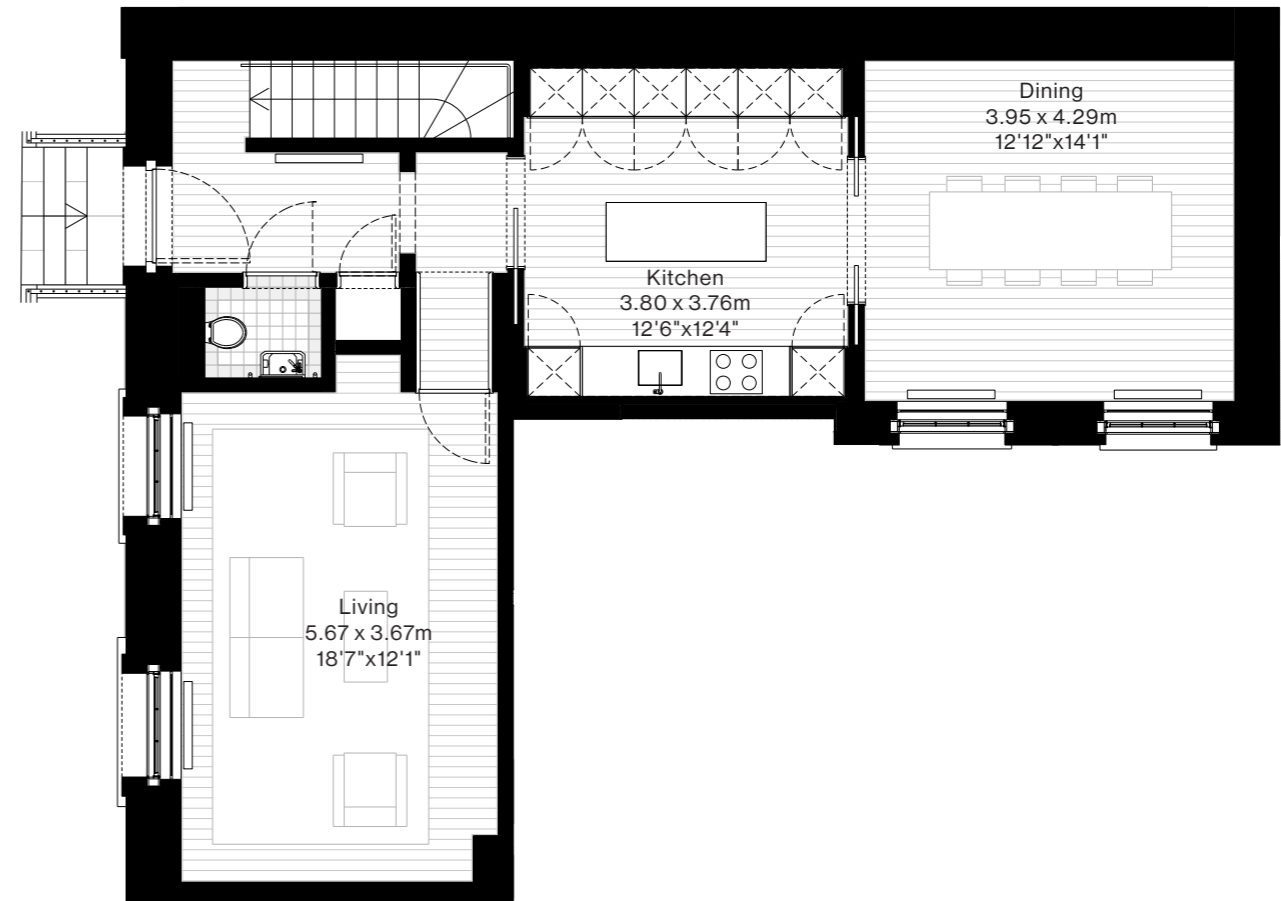


Lower Ground Floor Plan

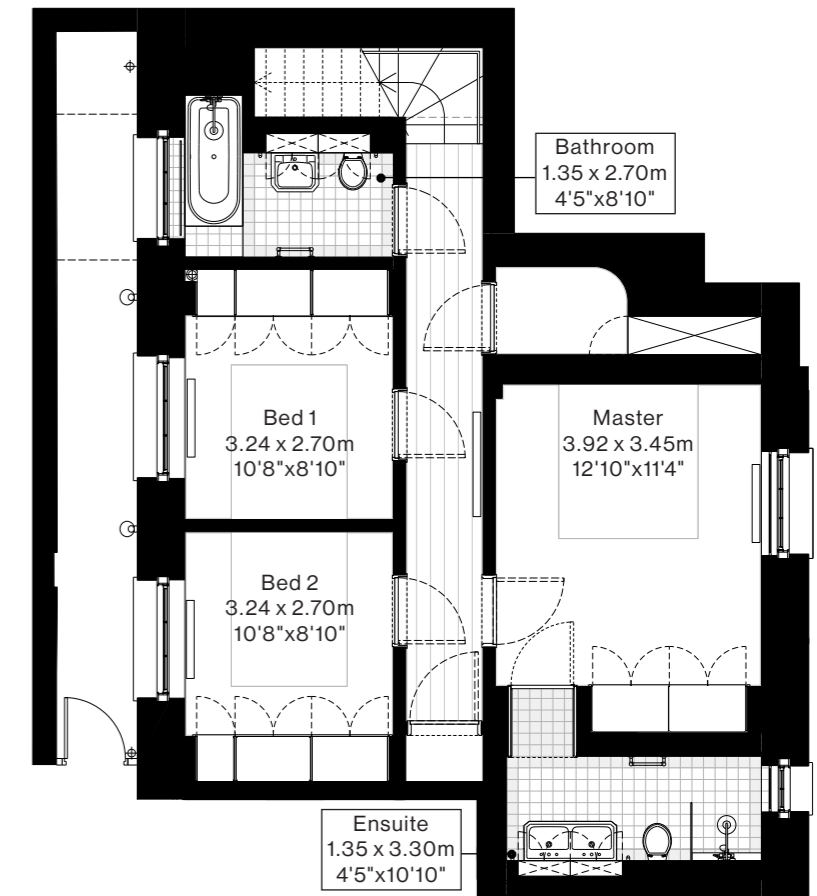


Unit B

- Apartment Type: duplex
- Area: 142m²/1,528ft²
- Location: ground & lower ground floor
- Bedrooms: 3, 1 en-suite
- Living Room Ceiling Height: 3.38m
- Amenities: Private front door off Newcourt Street, utility room, covered bike storage & dedicated external space.



Ground Floor Plan

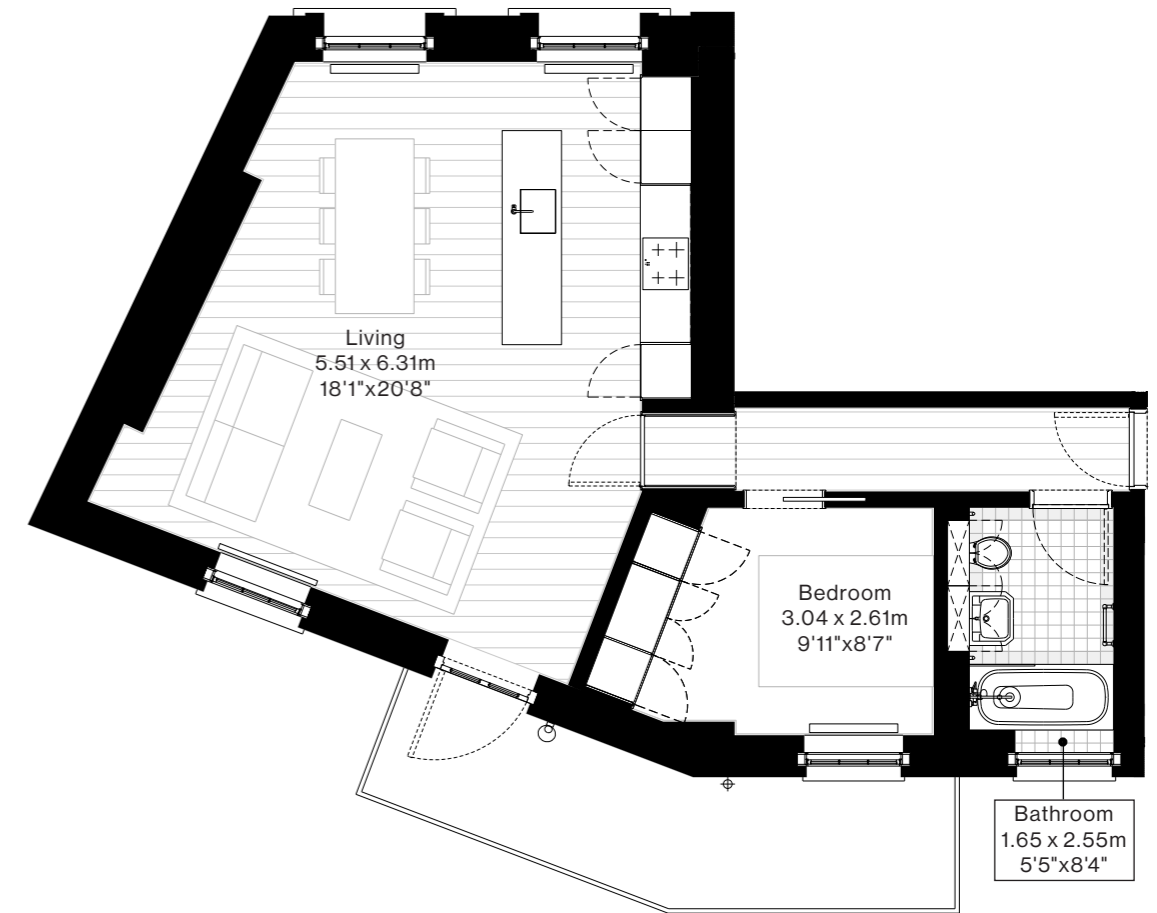
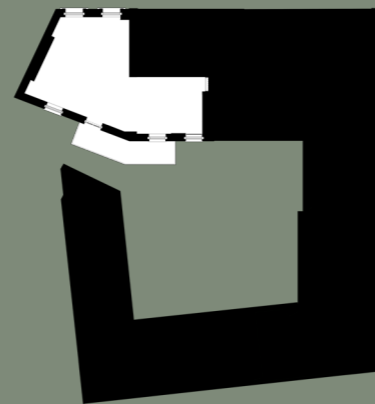


Lower Ground Floor Plan



Unit C

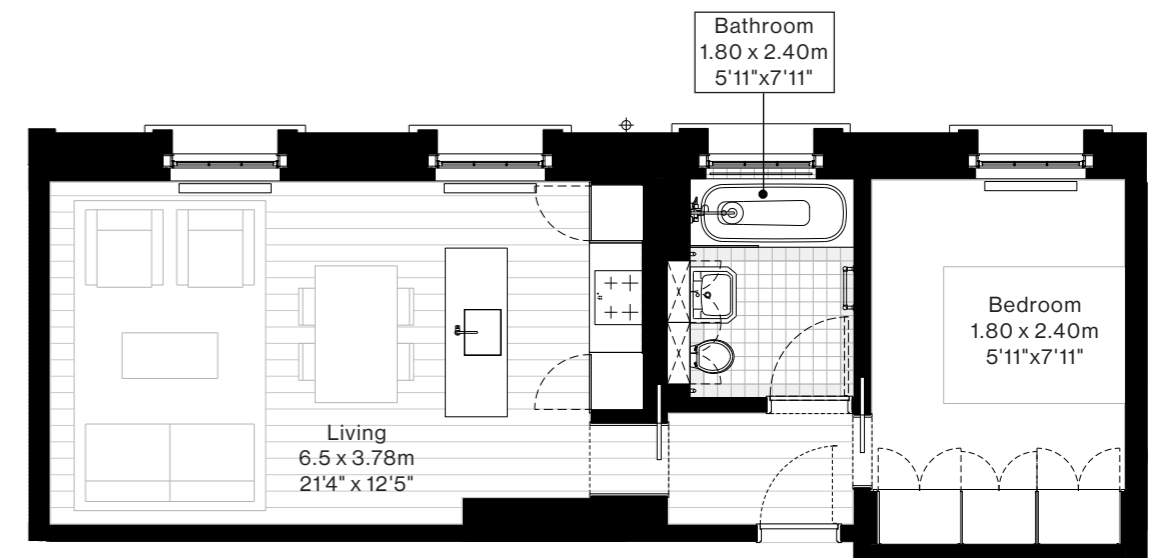
- Apartment Type: lateral
- Area: 62m²/667ft²
- Balcony: 10m²/107ft²
- Location: First Floor
- Bedrooms: 1
- Living Room Ceiling Height: 2.9m
- Amenities: Access through courtyard, lift, & covered bike storage.



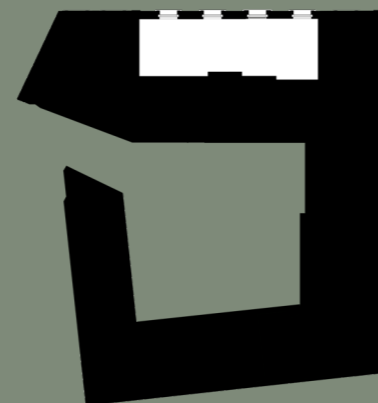
Unit C Floor Plan

Unit D

- Apartment Type: lateral
- Area: 50m²/538ft²
- Location: First Floor
- Bedrooms: 1
- Living Room Ceiling Height: 2.9m
- Amenities: Access through courtyard, lift & covered bike storage.

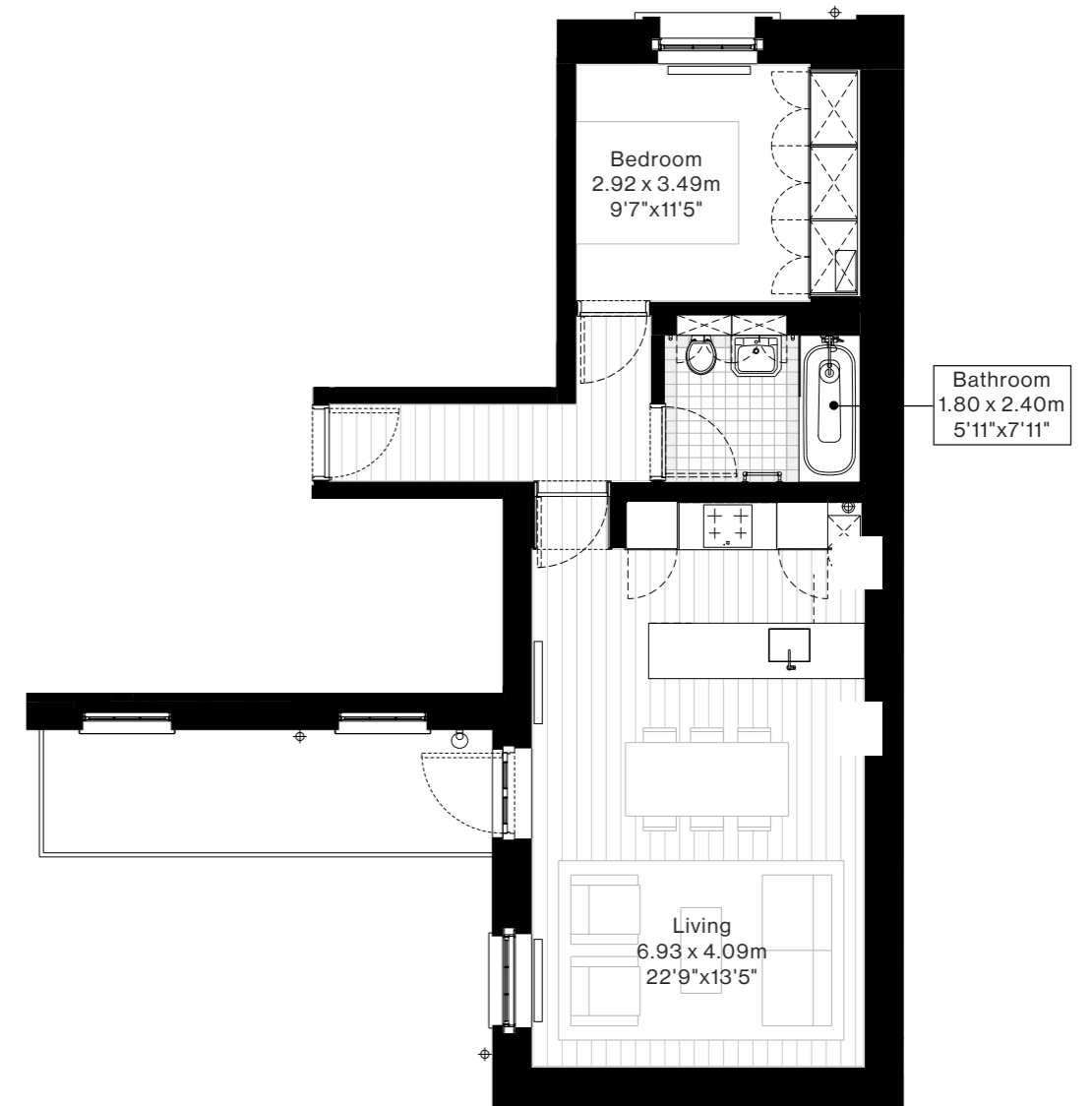
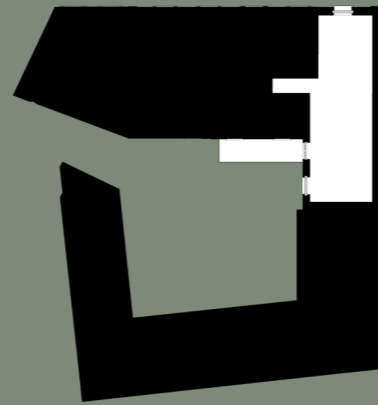


Unit D Floor Plan



Unit E

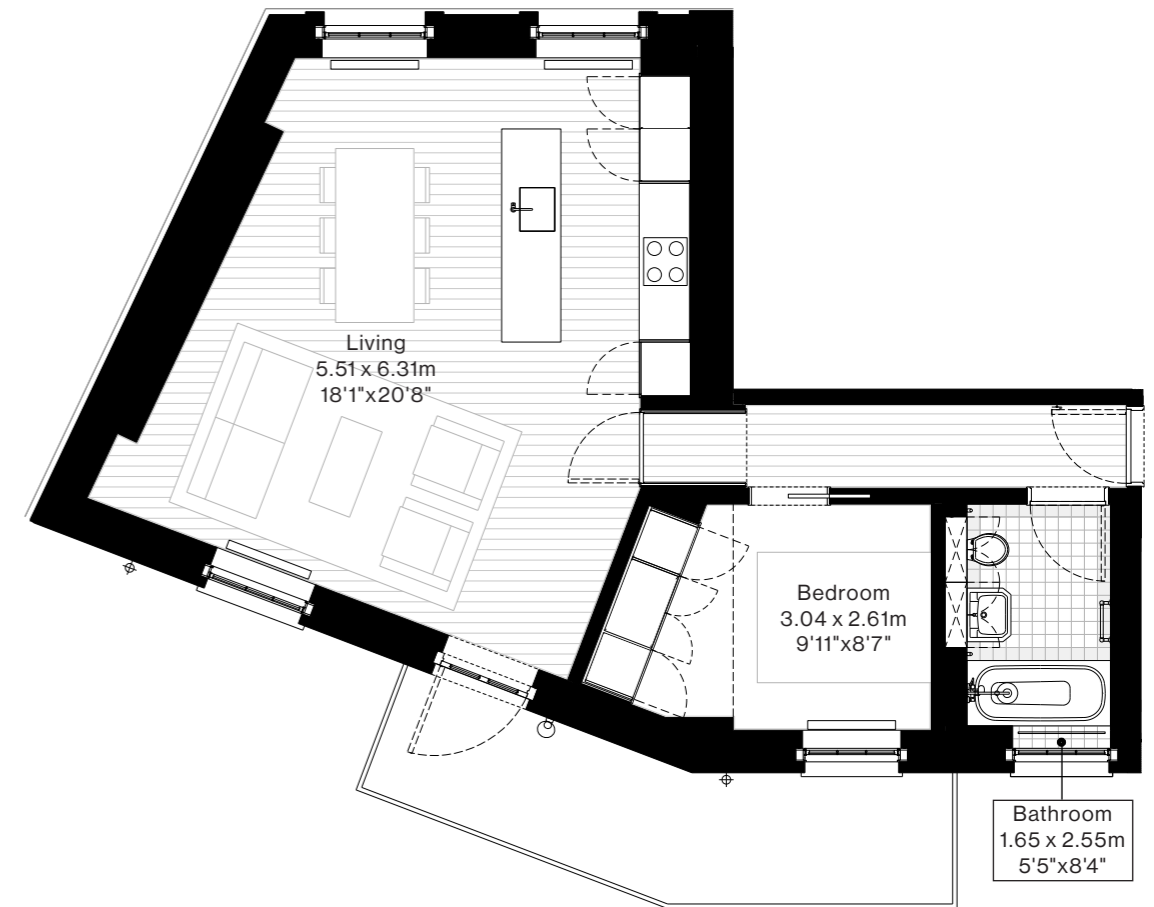
- Apartment Type: lateral
- Area: 54m²/581ft²
- Balcony: 8m²/86ft²
- Location: First Floor
- Bedrooms: 1
- Living Room Ceiling Height: 2.9m
- Amenities: Access through courtyard, lift, & covered bike storage.



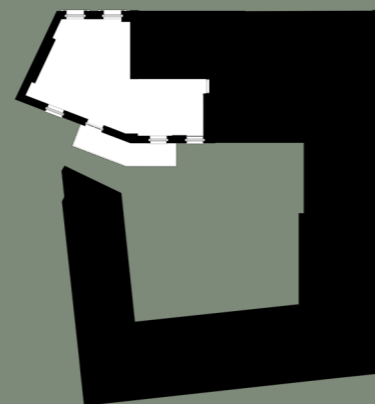
Unit E Floor Plan

Unit F

- Apartment Type: lateral
- Area: 62m²/667ft²
- Balcony: 10m²/107ft²
- Location: Second Floor
- Bedrooms: 1
- Living Room Ceiling Height: 2.8m
- Amenities: Access through courtyard, lift, & covered bike storage.

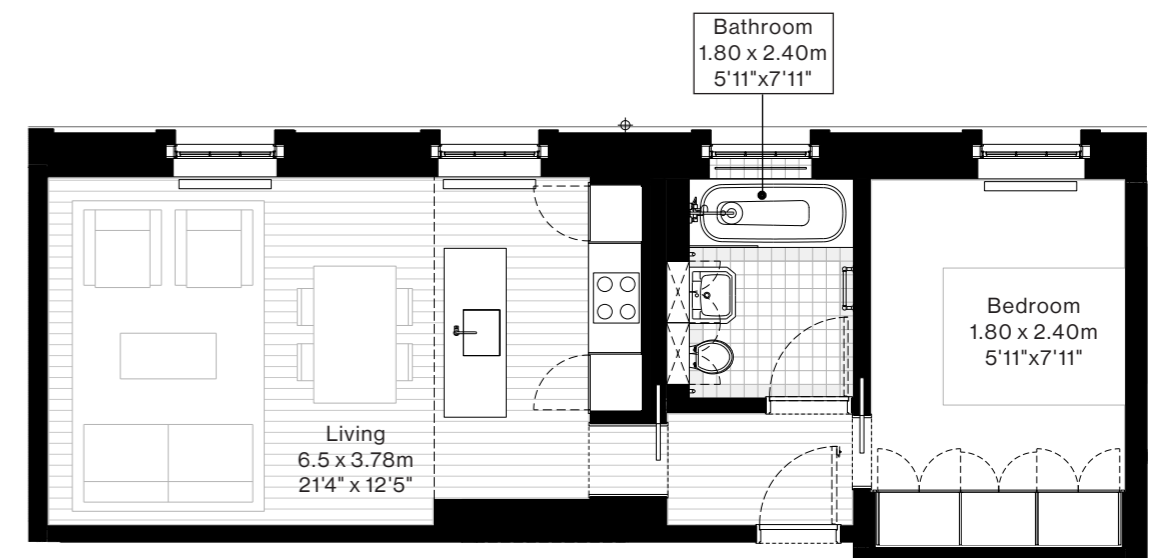
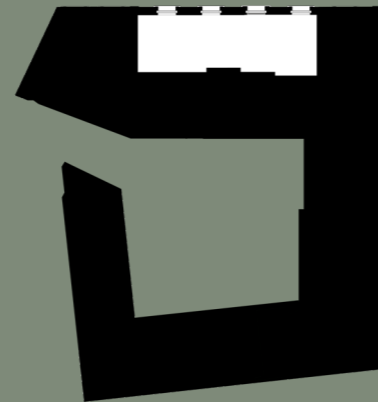


Unit F Floor Plan



Unit G

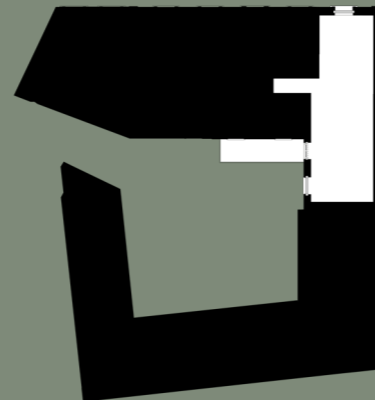
- Apartment Type: lateral
- Area: 50m²/538ft²
- Location: Second Floor
- Bedrooms: 1
- Living Room Ceiling Height: 2.7m
- Amenities: Access through courtyard, lift & covered bike storage.



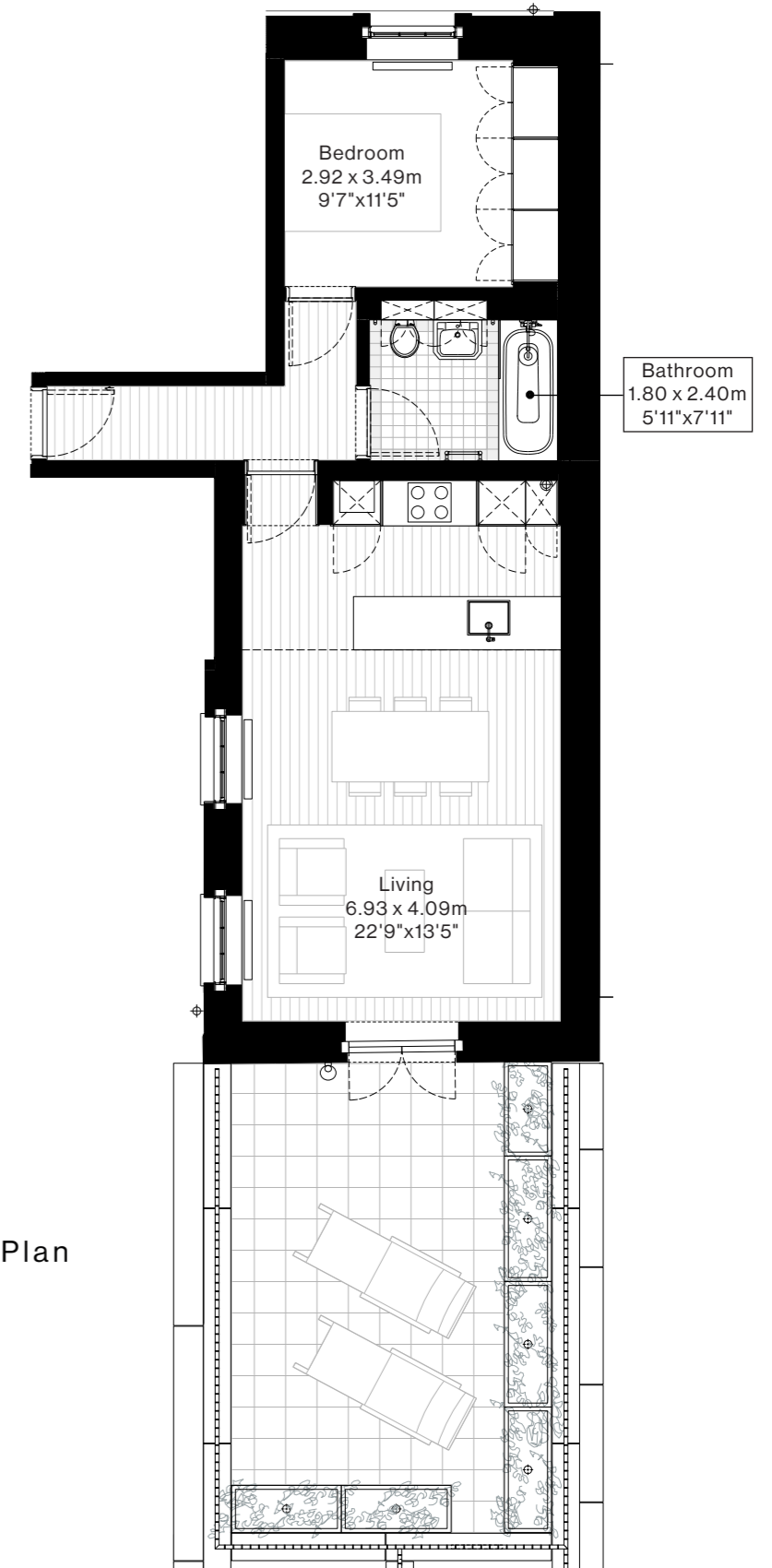
Unit G Floor Plan

Unit H

- Apartment Type: lateral
- Area: 54m²/581ft²
- Terrace: 26m²/280ft²
- Location: Second Floor
- Bedrooms: 1
- Living Room Ceiling Height: 2.5m
- Amenities: Access through courtyard, lift & covered bike storage.

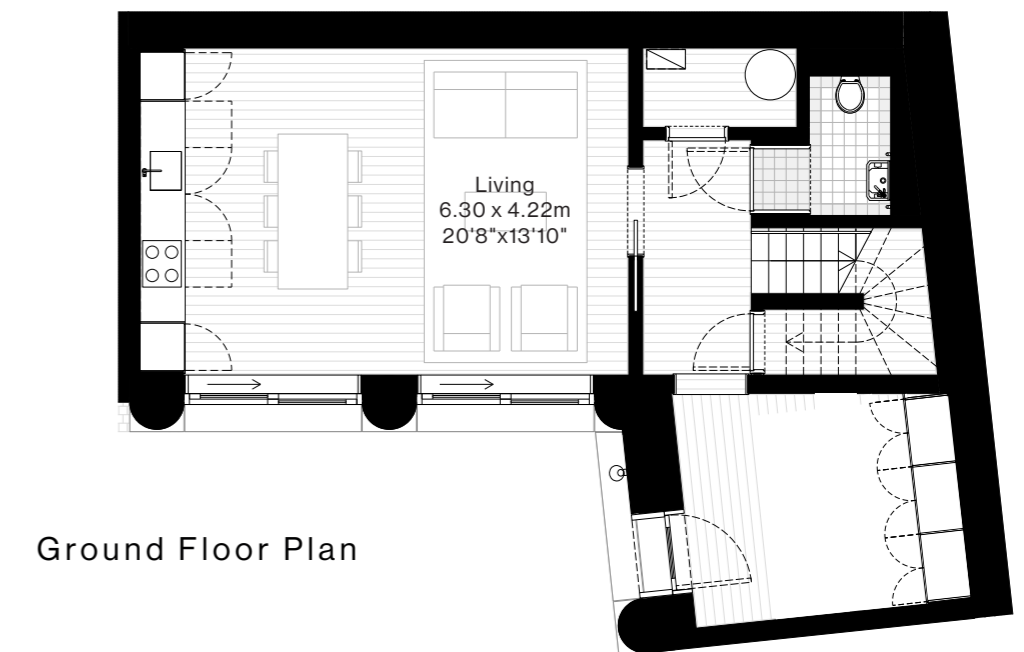
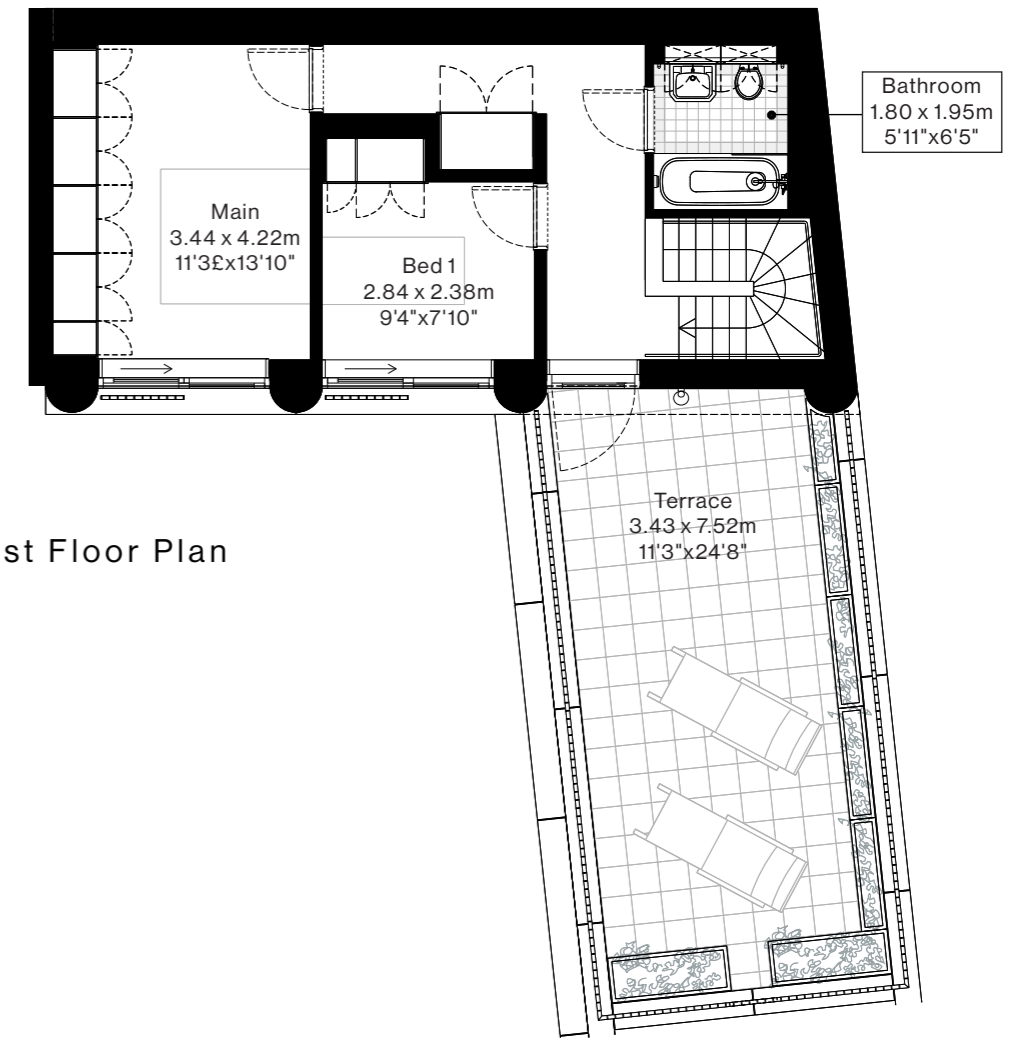


Unit H Floor Plan



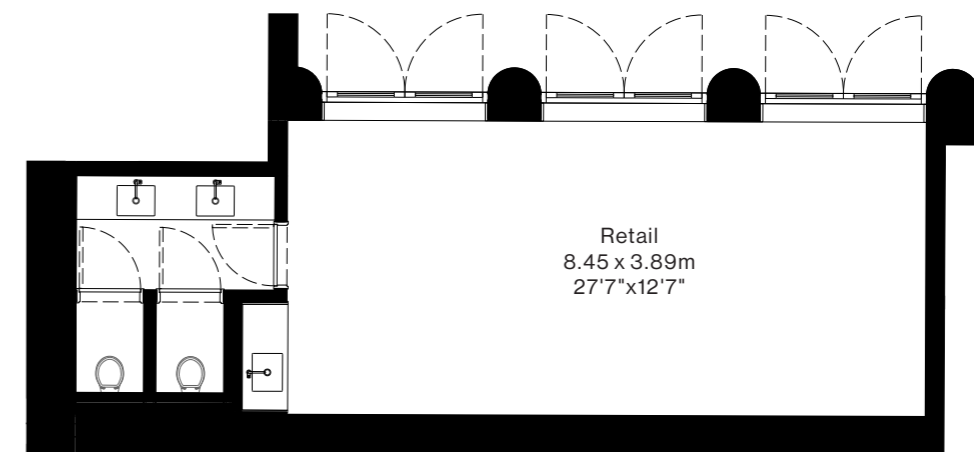
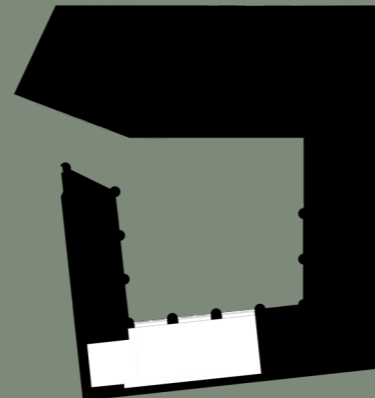
Unit 1

- Apartment Type: townhouse
- Area: 98m²/1,057ft²
- Terrace: 34m²/366ft²
- Location: ground & first floor
- Bedrooms: 2, 1 en-suite
- Living Room Ceiling Height: 3.0m
- Amenities: Private front door off courtyard & covered bike storage.



Retail Space

- Area: 50m²/538ft²
- Location: ground floor, overlooking the courtyard.
- Ceiling Height: 3.0m
- Amenities: Access through courtyard, 2 WCs & kitchenette.



Retail Unit Floor Plan



FOR LEASING & SALES ENQUIRIES EMAIL:

info@wendoverpartners.com

[20 NEWCOURT ST]

A DEVELOPMENT BY

WENDOVER